

## SECTION 6.11

### EXPLORER FOLLOWSPOT

Catalog Number	Description	Section
Explorer	Explorer Followspot (Full Drawing)	6.11.1
Document	Explorer Lower Housing	6.11.2
	Explorer Lamp Assembly	6.11.3
	Explorer Iris & Shutter	6.11.4
	Explorer Rear Focus	6.11.5
	Explorer Douser	6.11.6
	Explorer Front Lens	6.11.7
	Explorer Electrical	6.11.8
	Explorer Hood	6.11.9
	Explorer Color Changer	6.11.10
	Explorer Stand	6.11.11
	Explorer Crank Style Stand	6.11.12
	Explorer Yoke	6.11.13

#### ARCHITECT'S & ENGINEER'S SPECIFICATIONS

##### **EXPLORER LONGTHROW WITH CONVERSION KIT**

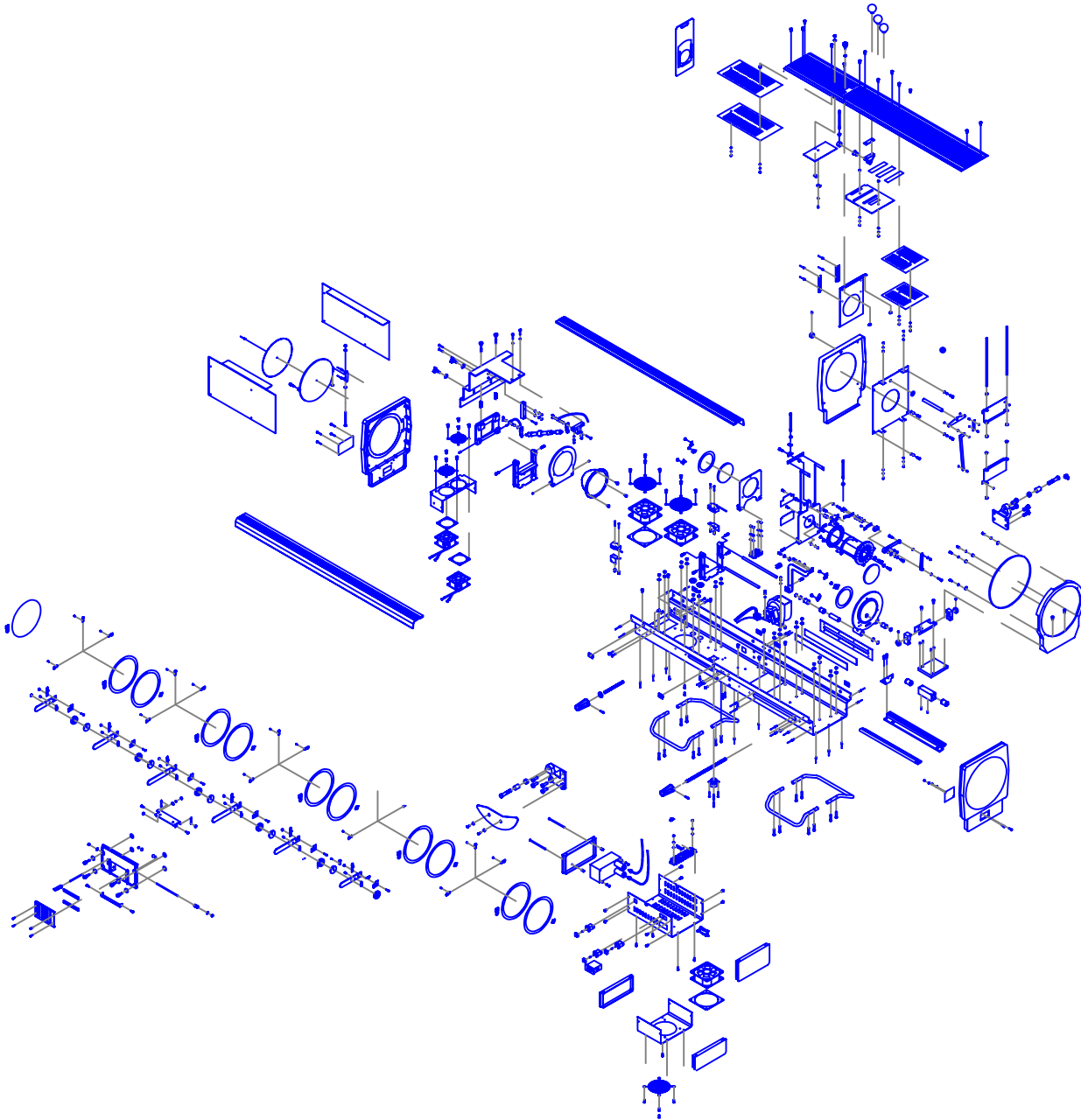
The luminaire shall be a 1200-watt HMI follow spotlight designed to accept the 1200W/GS Metal Halide Lamp. Use of a proprietary lamp shall not be acceptable. The lamp shall be factory pre-focused on an adjustable mounting mechanism. Fine focus obtainable via adjusting set screws. Housing construction shall be die cast aluminum. Sheet metal construction shall not be acceptable. Each unit is provided with an adjustable 4½" condensing and 11" objective lens to achieve variable zoom range. Toolless relamping shall be accomplished through one of two side hinged access doors. A third front door provides easy access for cleaning the lens and front interior. The luminaire shall provide separate fan and lamp switches, a 6 lever self-canceling colorboom. The gate assembly consisting of a nichrome stainless steel bladed iris and shutter assembly shall have easily accessible top mounted control handles. Side or rear mounted controls shall not be acceptable. A 4 leg telescoping stand/base with locking casters and leveling jacks is provided. 3-legged bases shall not be acceptable. The ballast shall be a remote power supply requiring only 13.5 amps @120VAC. The 36" power supply wire shall include an attached male Edison connector. Ballast shall be constructed of stainless steel weighing 47 lbs. Inner-connection between power supply and lamphouse shall be with a removable seven conductor type SO cord with quarter turn military spec connector. The unit shall include an elapsed time meter. Exterior shall be black wrinkle finish.

A new designed lens kit when installed converts the Explorer long throw follow spot to an extremely effective medium throw unit ideally suited for theatre application. The kit contains a different front lens, factory mounted to a retaining ring, reflector and middle lens. The luminaire shall be the Altman Explorer.

# EXPLORER FOLLOWSPOT

Catalog No:	Assy No:	Description:	Revision:	Section:
EXPLORER		LONG THROW FOLLOWSPOT	B	6.11.1

Color Code: ● = Object ● = MFG. Number-Not for Sale ● = Obsolete ● = Part Number/Note **Bold** = Sub-Assembly



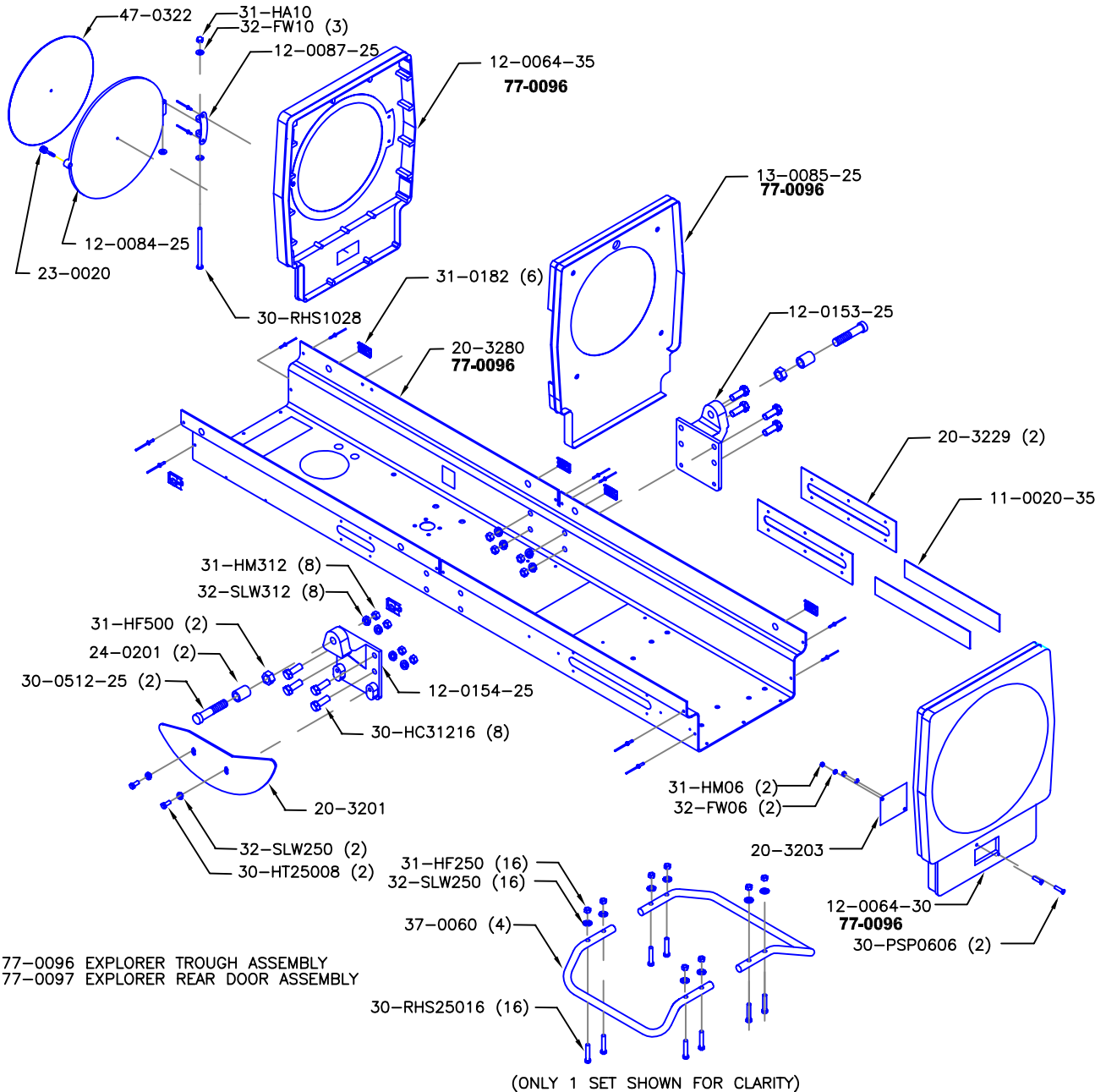
# ALTMAN

Altman Stage Lighting Co. Inc.  
 57 Alexander St., Yonkers, NY, 10701  
 Ph: (914) 476-7987 Fax: (914) 963-7304  
<http://www.altmanltg.com>

# EXPLORER LOWER HOUSING

Catalog No:	Assy No:	Description:	Revision:	Section:
EXPLORER		EXPLORER LOWER HOUSING	B	6.11.2

Color Code: ● = Object ● = MFG. Number-Not for Sale ● = Obsolete ● = Part Number/Note **Bold** = Sub-Assembly



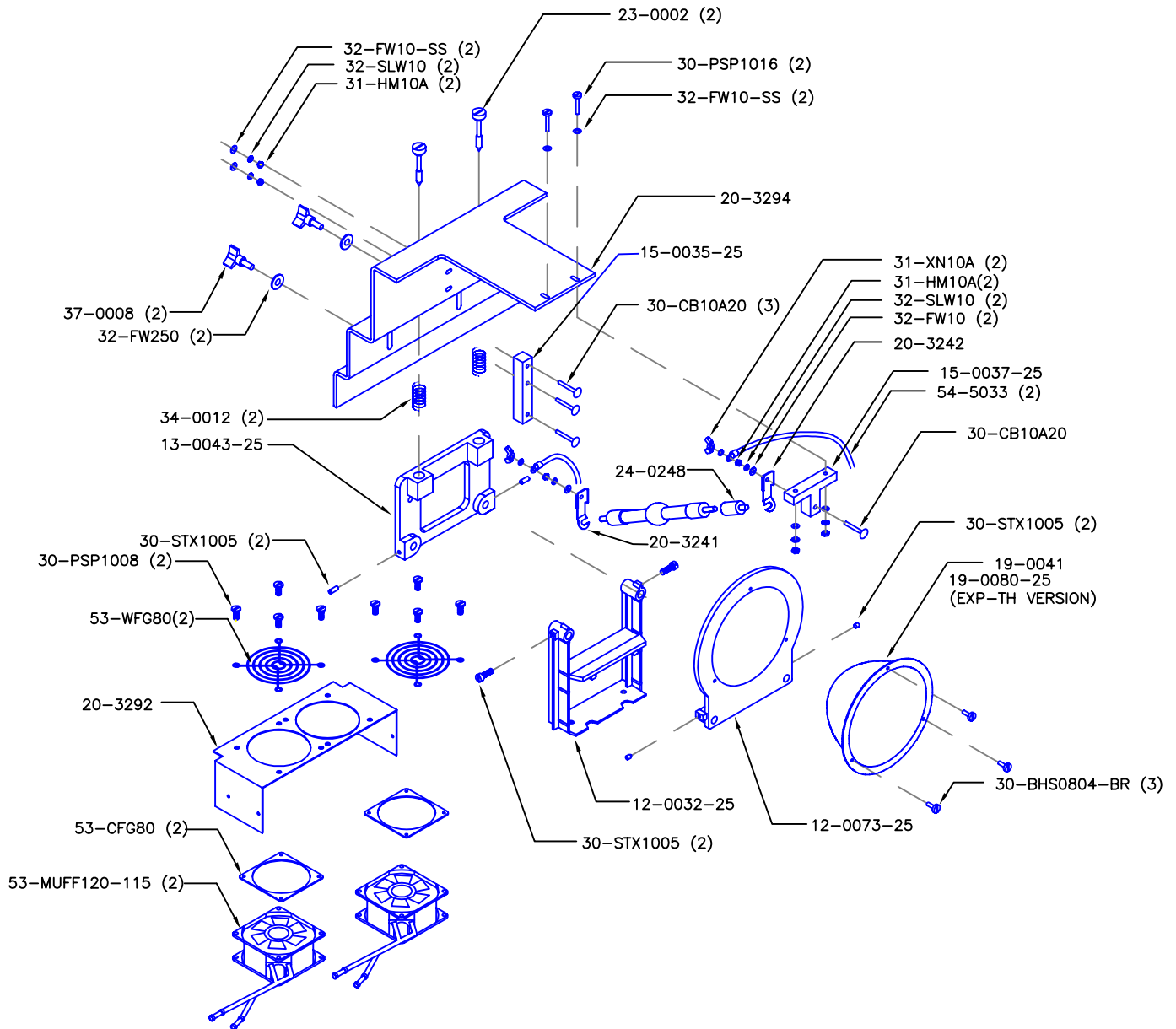
# ALTMAN

Altman Stage Lighting Co. Inc.  
57 Alexander St., Yonkers, NY, 10701  
Ph: (914) 476-7987 Fax: (914) 963-7304  
<http://www.altmanltg.com>

# EXPLORER LAMP ASSY

Catalog No:	Assy No:	Description:	Revision:	Section:
EXPLORER		LAMP & REFLECTOR ASSY	B	6.11.3

Color Code: ● = Object ● = MFG. Number-Not for Sale ● = Obsolete ● = Part Number/Note **Bold** = Sub-Assembly



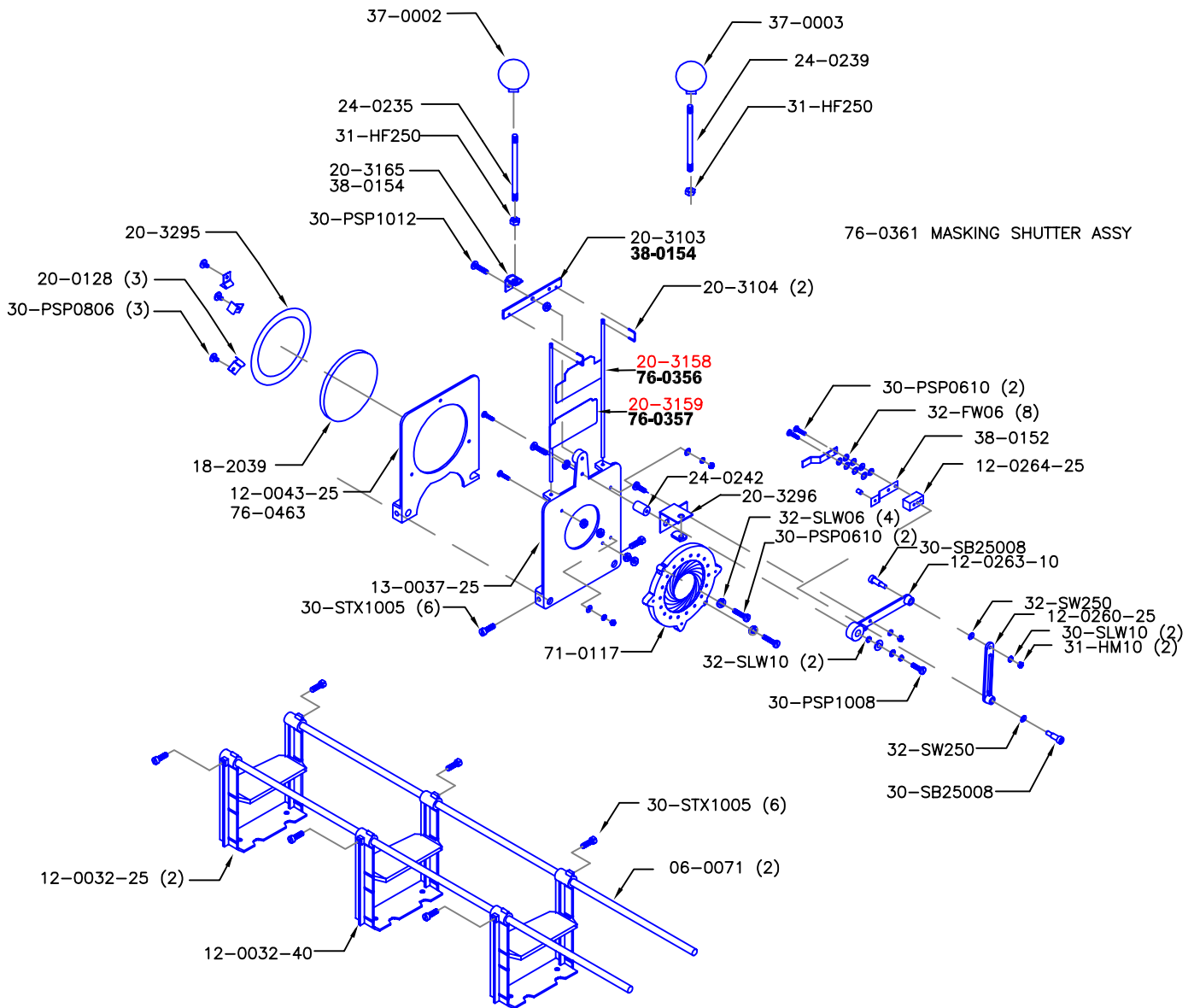
# ALTMAN

Altman Stage Lighting Co. Inc.  
57 Alexander St., Yonkers, NY, 10701  
Ph: (914) 476-7987 Fax: (914) 963-7304  
<http://www.altmanltg.com>

# EXPLORER SHUTTER & IRIS ASSY

Catalog No:	Assy No:	Description:	Revision:	Section:
EXPLORER		SHUTTER & IRIS COMPONENTS	B	6.11.4

Color Code: ● = Object ● = MFG. Number-Not for Sale ● = Obsolete ● = Part Number/Note **Bold** = Sub-Assembly



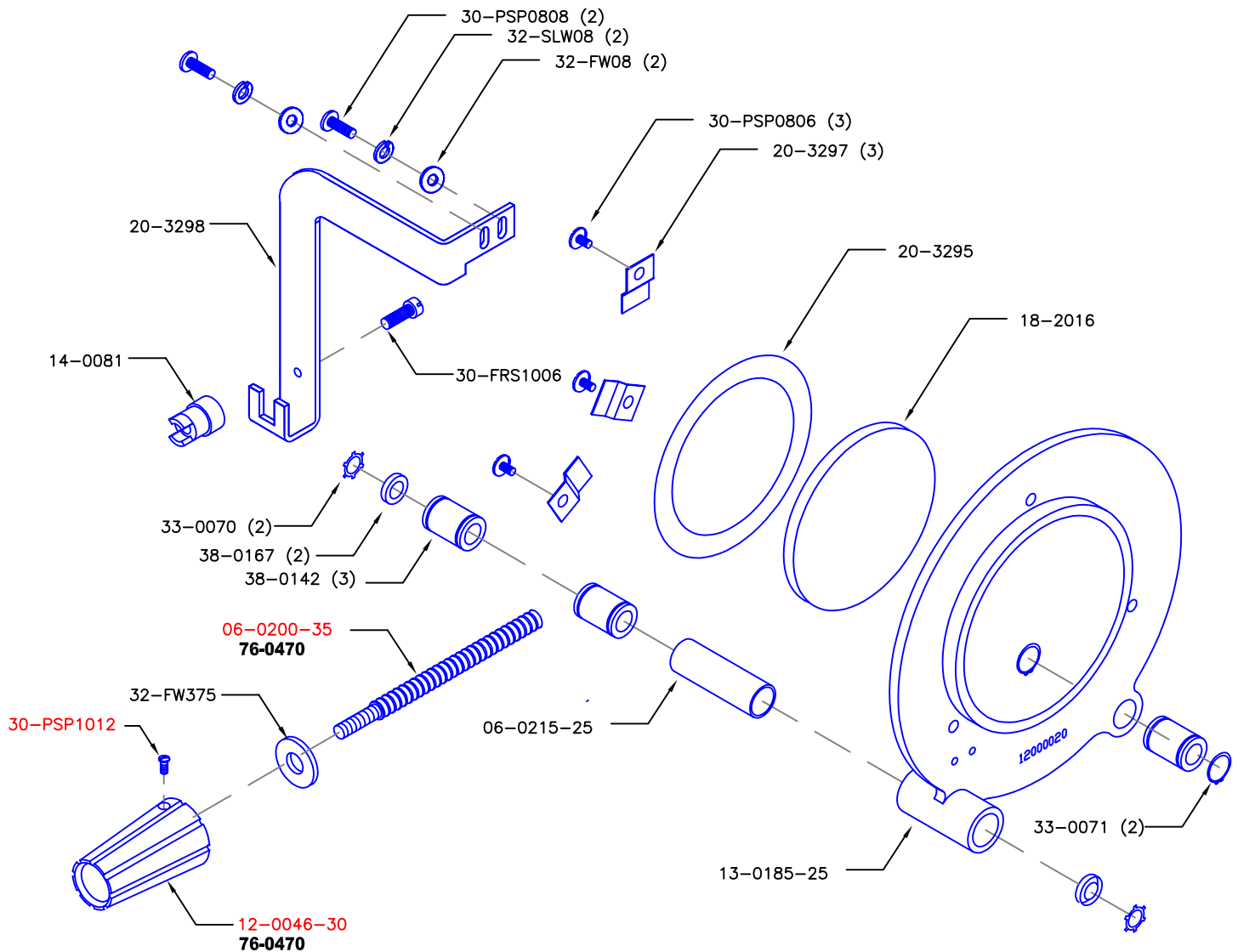
# ALTMAN

Altman Stage Lighting Co. Inc.  
57 Alexander St., Yonkers, NY, 10701  
Ph: (914) 476-7987 Fax: (914) 963-7304  
<http://www.altmanltg.com>

# EXPLORER REAR FOCUS LENS

Catalog No:	Assy No:	Description:	Revision:	Section:
EXPLORER		REAR FOCUS LENS	D	6.11.5

Color Code: ● = Object ● = MFG. Number-Not for Sale ● = Obsolete ● = Part Number/Note **Bold** = Sub-Assembly



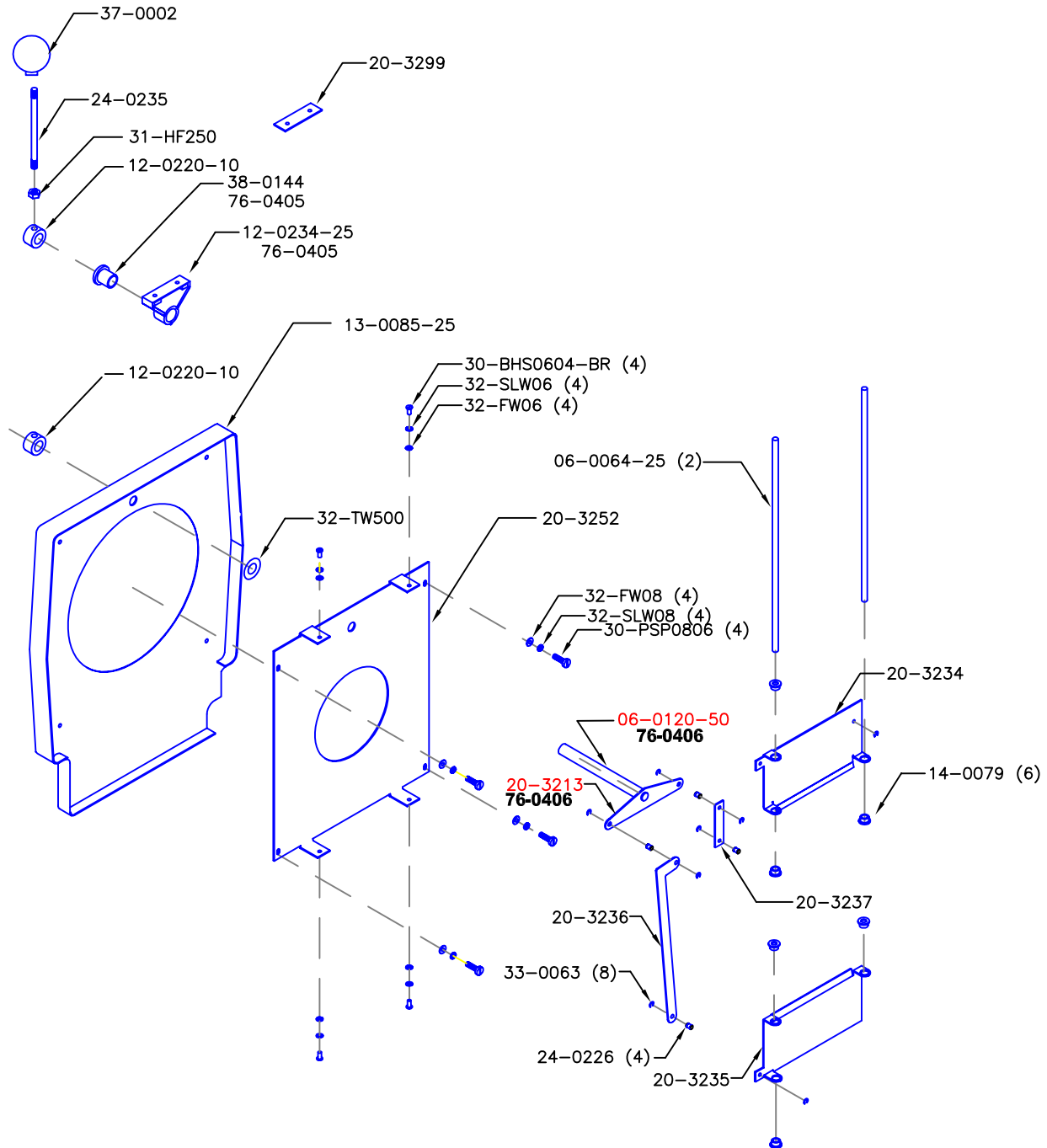
# ALTMAN

Altman Lighting Co. Inc.  
57 Alexander St., Yonkers, NY, 10701  
Ph: (914) 476-7987 Fax: (914) 963-7304  
<http://www.altmanltg.com>

# EXPLORER DOUSER

Catalog No:	Assy No:	Description:	Revision:	Section:
EXPLORER	76-0467	DOUSER COMPONENTS	B	6.11.6

Color Code: ● = Object ● = MFG. Number-Not for Sale ● = Obsolete ● = Part Number/Note **Bold** = Sub-Assembly



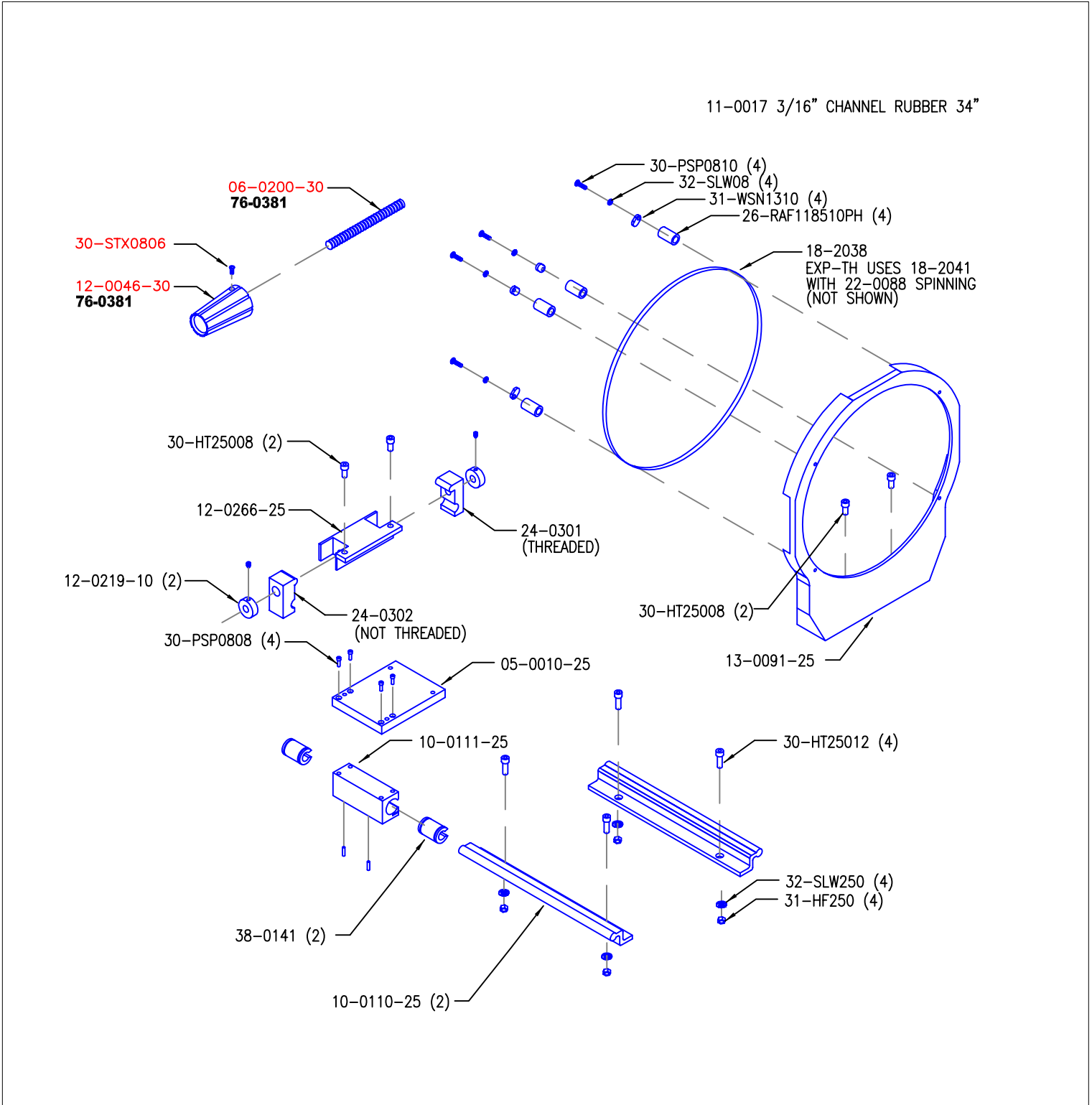
# ALTMAN

Altman Stage Lighting Co. Inc.  
57 Alexander St., Yonkers, NY, 10701  
Ph: (914) 476-7987 Fax: (914) 963-7304  
<http://www.altmanltg.com>

# EXPLORER FRONT LENS

Catalog No:	Assy No:	Description:	Revision:	Section:
EXPLORER		FRONT LENS COMPONENTS	D	6.11.7

Color Code: ● = Object ● = MFG. Number-Not for Sale ● = Obsolete ● = Part Number/Note **Bold** = Sub-Assembly



# ALTMAN

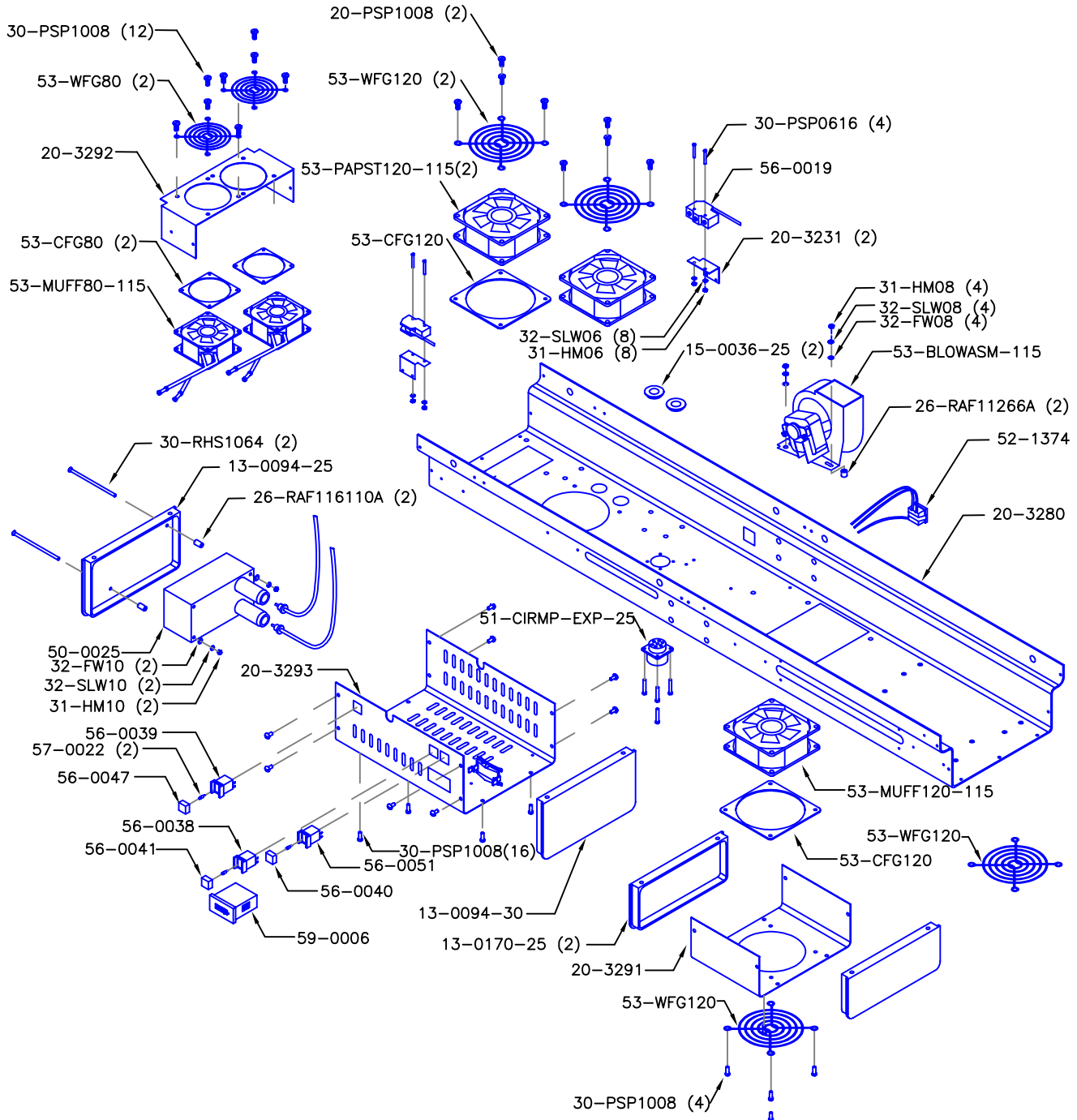
Altman Lighting Co. Inc.  
57 Alexander St., Yonkers, NY, 10701  
Ph: (914) 476-7987 Fax: (914) 963-7304  
<http://www.altmanltg.com>



# EXPLORER ELECTRICAL

Catalog No:	Assy No:	Description:	Revision:	Section:
EXPLORER		EXPLORER ELECTRICAL	B	6.11.8

Color Code: ● = Object ● = MFG. Number-Not for Sale ● = Obsolete ● = Part Number/Note **Bold** = Sub-Assembly



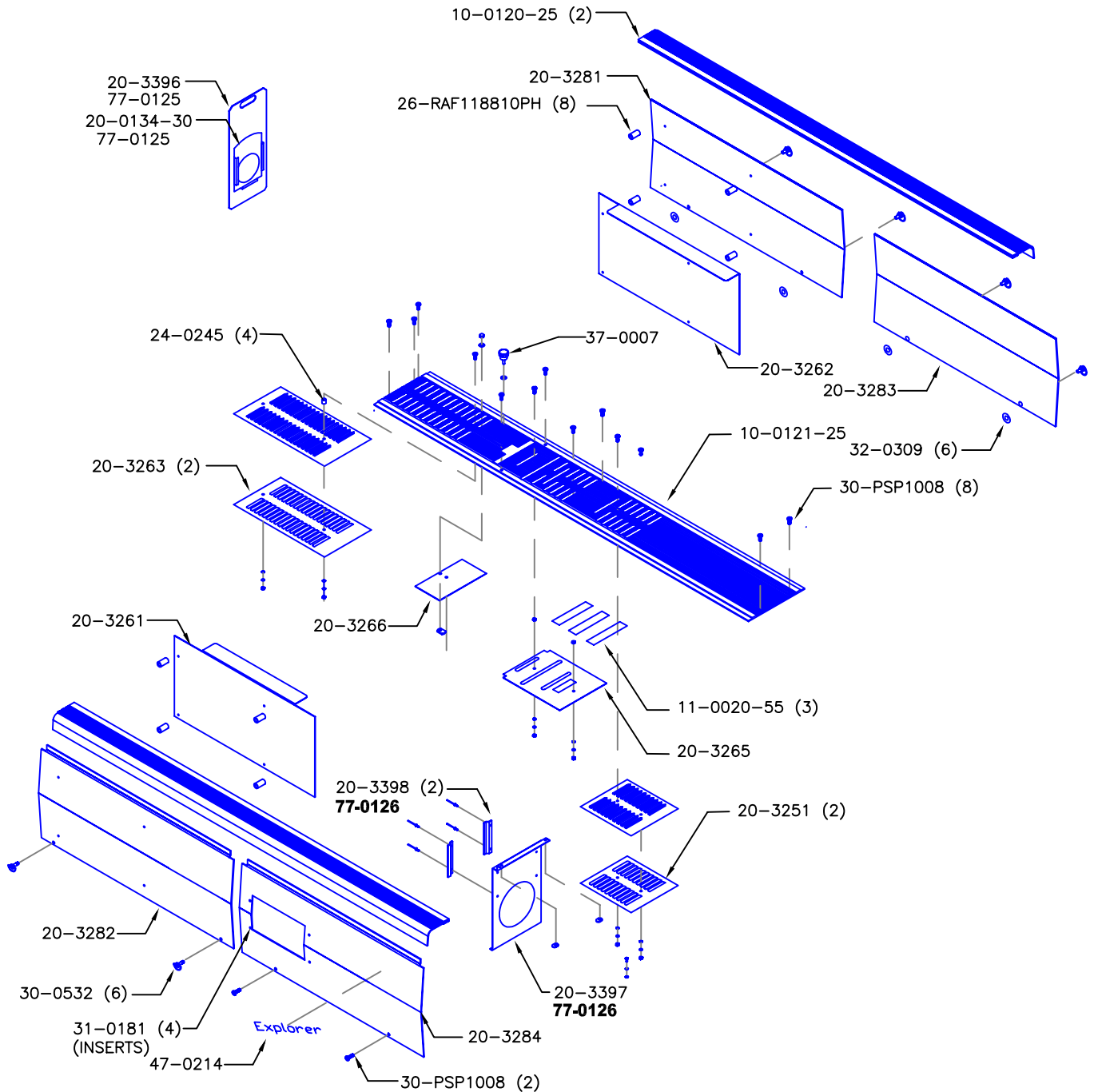
# ALTMAN

Altman Stage Lighting Co. Inc.  
 57 Alexander St., Yonkers, NY, 10701  
 Ph: (914) 476-7987 Fax: (914) 963-7304  
<http://www.altmanltg.com>

# EXPLORER HOOD

Catalog No:	Assy No:	Description:	Revision:	Section:
EXPLORER		EXPLORER HOOD	B	6.11.9

Color Code: ● = Object ● = MFG. Number-Not for Sale ● = Obsolete ● = Part Number/Note **Bold** = Sub-Assembly



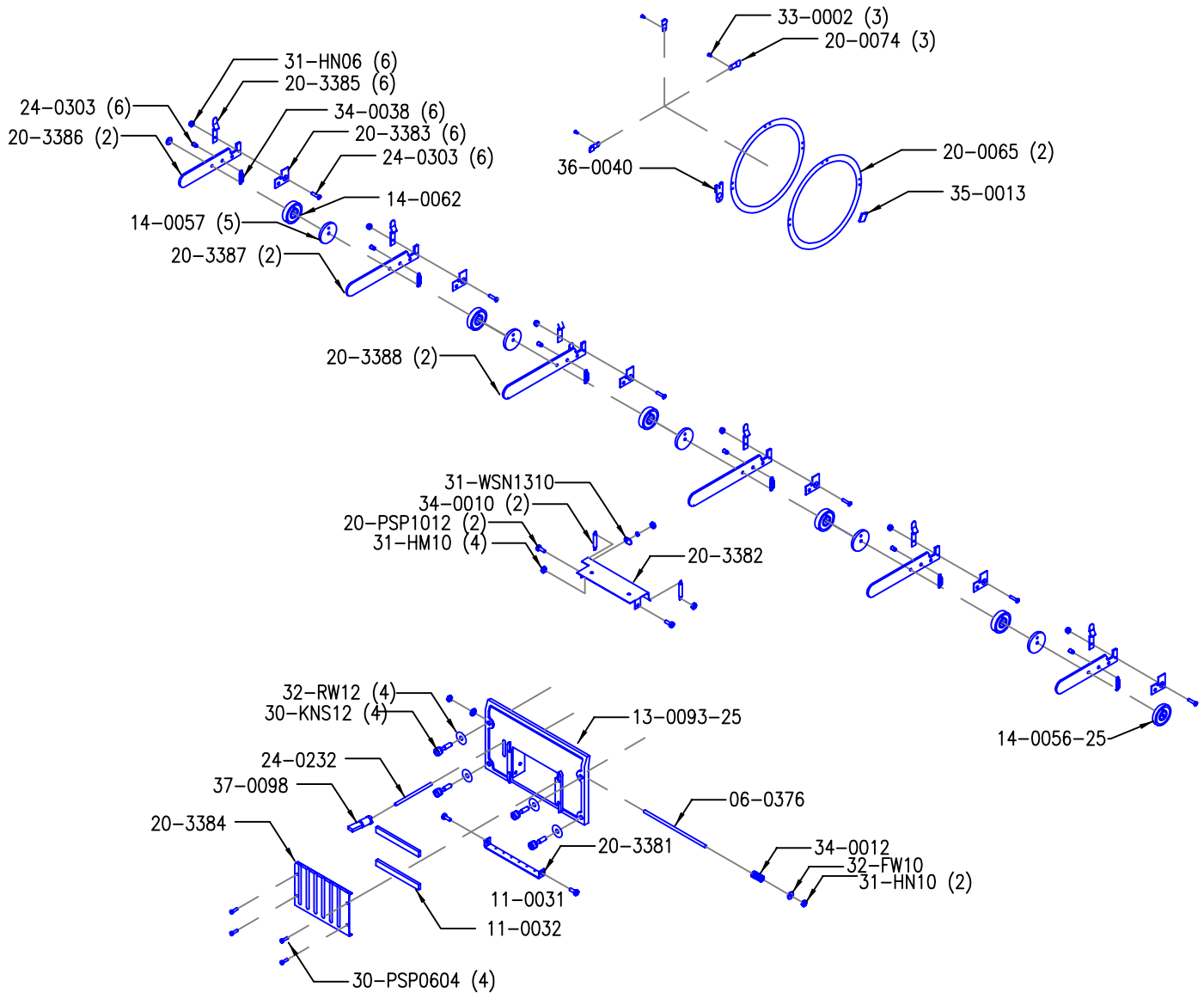
# ALTMAN

Altman Stage Lighting Co. Inc.  
57 Alexander St., Yonkers, NY, 10701  
Ph: (914) 476-7987 Fax: (914) 963-7304  
<http://www.altmanltg.com>

# EXPLORER COLOR CHANGER

Catalog No:	Assy No:	Description:	Revision:	Section:
EXPLORER	77-0119	COLOR CHANGER	C	6.11.10

Color Code: ● = Object ● = MFG. Number-Not for Sale ● = Obsolete ● = Part Number/Note **Bold** = Sub-Assembly



# ALTMAN

Altman Lighting Co. Inc.  
57 Alexander St., Yonkers, NY, 10701  
Ph: (914) 476-7987 Fax: (914) 963-7304  
<http://www.altmanltg.com>

# EXPLORER STAND

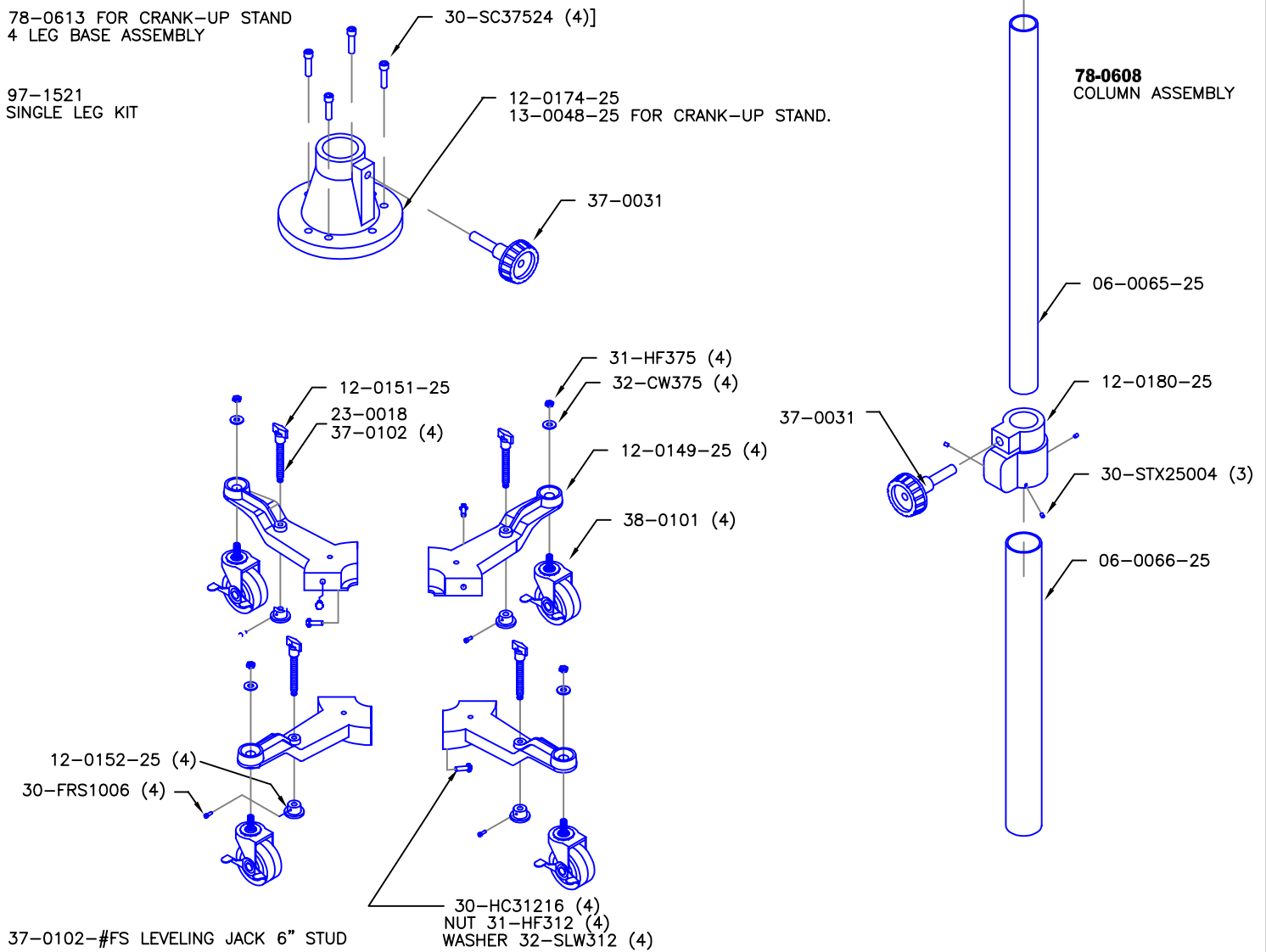
Catalog No:	Assy No:	Description:	Revision:	Section:
78-0704		EXPLORER STAND	D	6.11.11

Color Code: ● = Object ● = MFG. Number-Not for Sale ● = Obsolete ● = Part Number/Note **Bold** = Sub-Assembly

78-0607  
4 LEG BASE ASSEMBLY

78-0613 FOR CRANK-UP STAND  
4 LEG BASE ASSEMBLY

97-1521  
SINGLE LEG KIT



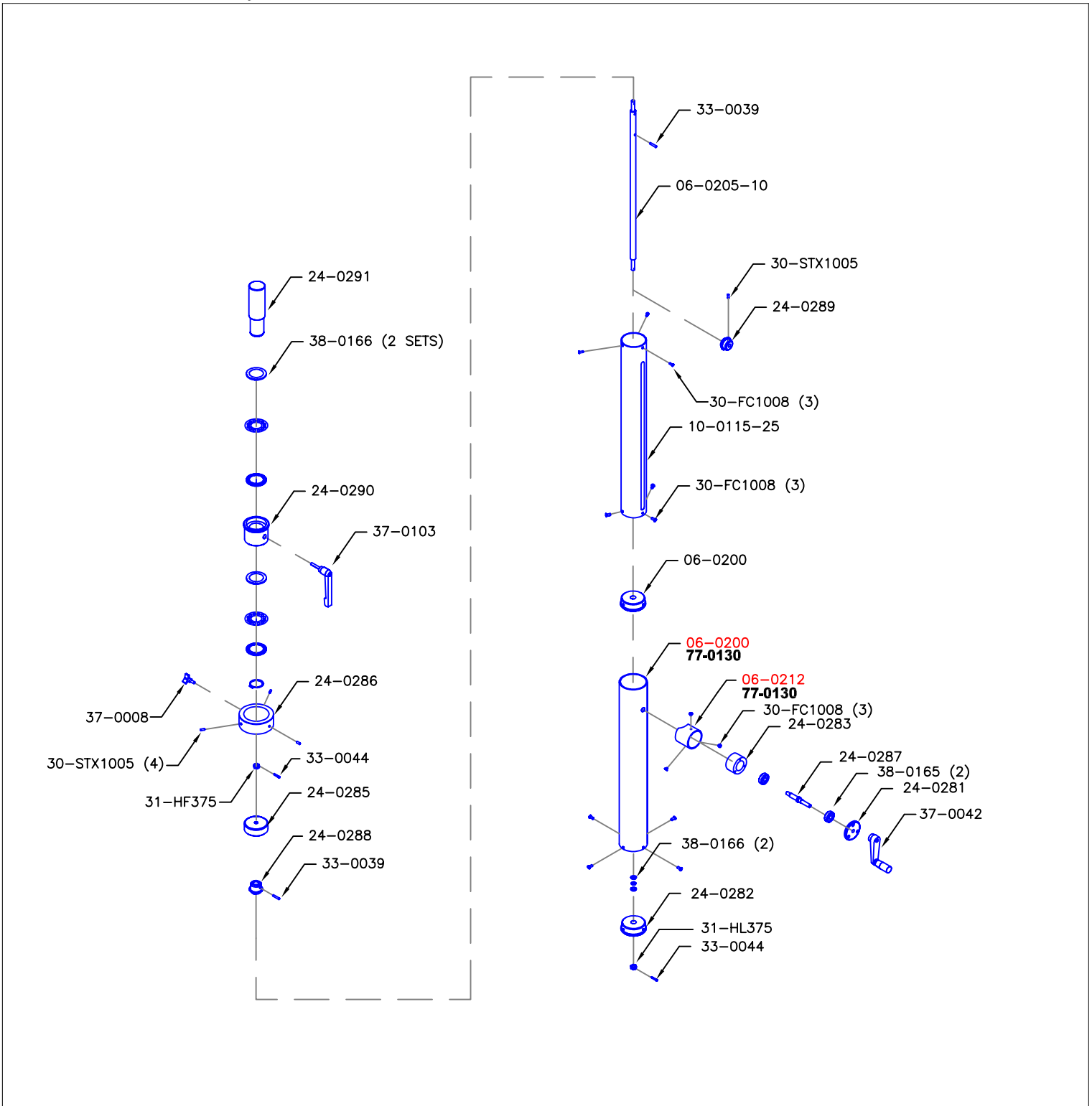
# ALTMAN

Altman Lighting Co. Inc.  
57 Alexander St., Yonkers, NY, 10701  
Ph: (914) 476-7987 Fax: (914) 963-7304  
<http://www.altmanltg.com>

# CRANK STAND ASSEMBLY

Catalog No:	Assy No:	Description:	Revision:	Section:
EXPLORER	78-0610	CRANK STAND COLUMN	B	6.11.12

Color Code: ● = Object ● = MFG. Number-Not for Sale ● = Obsolete ● = Part Number/Note **Bold** = Sub-Assembly



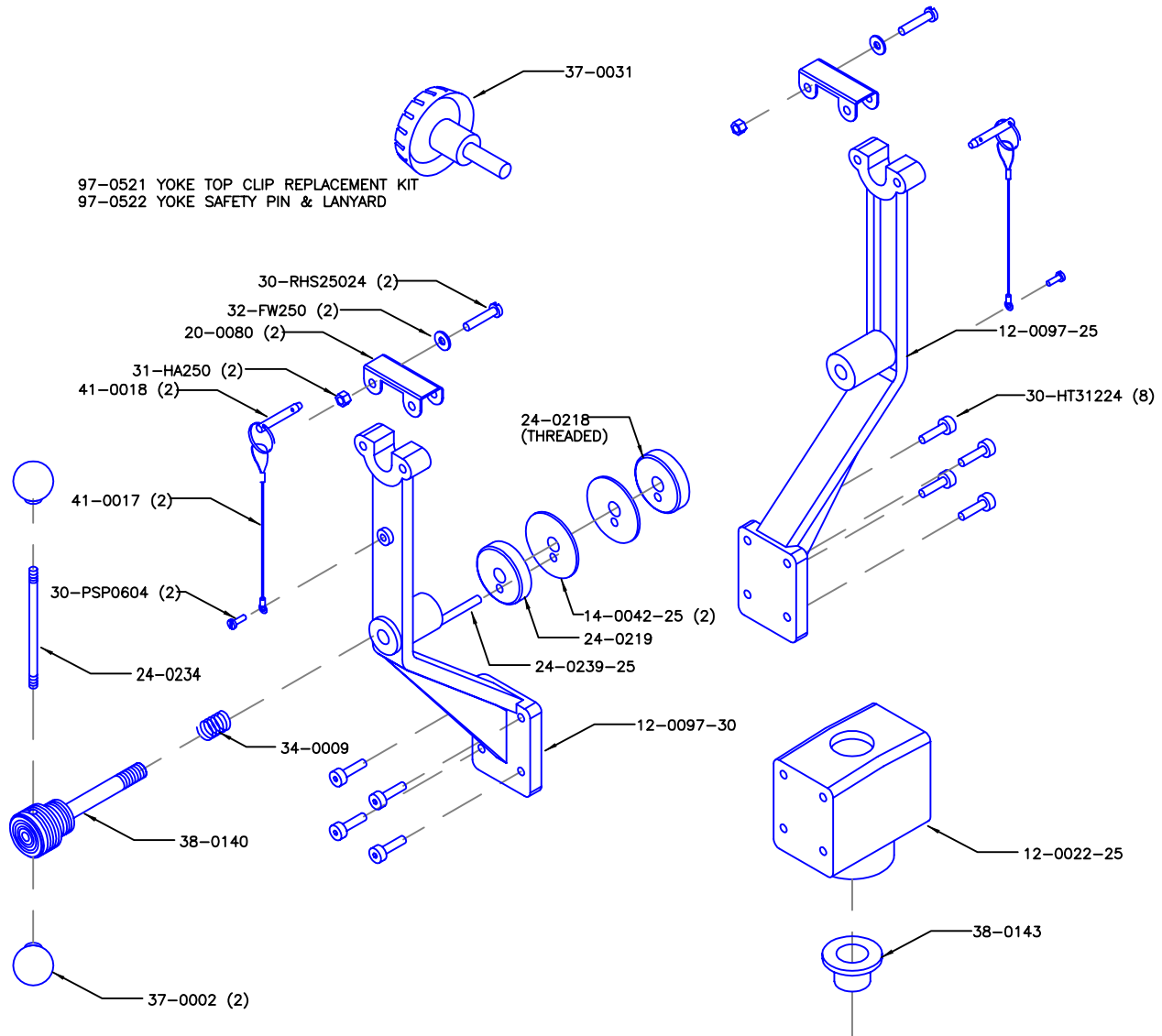
# ALTMAN

Altman Stage Lighting Co. Inc.  
 57 Alexander St., Yonkers, NY, 10701  
 Ph: (914) 476-7987 Fax: (914) 963-7304  
<http://www.altmanltg.com>

# EXPLORER YOKE

Catalog No:	Assy No:	Description:	Revision:	Section:
EXPLORER	78-0609	LONG THROW YOKE	B	6.11.13

Color Code: ● = Object ● = MFG. Number-Not for Sale ● = Obsolete ● = Part Number/Note **Bold** = Sub-Assembly



# ALTMAN

Altman Stage Lighting Co. Inc.  
57 Alexander St., Yonkers, NY, 10701  
Ph: (914) 476-7987 Fax: (914) 963-7304  
<http://www.altmanltg.com>