



# iCOLOR FRESCO

POWERED BY CHROMACORE



Color Kinetics® iColor® Fresco is a family of professional lights designed for architectural illumination. iColor Fresco is available in nominal lengths of 4', 2', and 1' and is the ideal solution for architectural highlights and other commercial, retail or residential applications. Each iColor Fresco unit is designed for use in both interior and exterior installations and meets specifications for use in wet and damp locations.

iColor Fresco projects a soft-edge beam of light at a 100° beam angle. Each unit adjusts through ±180 degrees of angular rotation and mechanically locks in place to maintain the desired lighting orientation. 15-degree angle indicators make multiple light alignments consistent and effortless.

For the ultimate in flexibility and control each iColor Fresco unit can be individually addressed along its entire length or at 1-foot intervals for astounding effects. iColor Fresco is controlled using a DMX512 lighting console, a PC, or a Color Kinetics controller.

iColor Fresco is a harmonious blend of art and functionality—its modern, sophisticated look also serves as a protective housing of rugged, extruded anodized aluminum. Every unit comes standard with a UV resistant, clear plastic lens and is pre-wired with power and data cables to minimize installation time. Long runs of lights are inter-connected and mounted using 'T' or 'L' accessory parts. Power is supplied using Color Kinetics PDS-150e, an intelligent power supply specially designed to distribute power and data to all connected lights. Using standard electrical junction boxes, iColor Fresco is extremely versatile and easily adapts to fit even the most creative mounting environments.

## iCOLOR FRESCO SPECIFICATIONS

<b>COLOR RANGE</b>	16.7 million (24bit) additive RGB colors; continuously variable intensity output range
<b>SOURCE</b>	High intensity colored LEDs
<b>BEAM ANGLE</b>	100°
<b>HOUSING</b>	Anodized aluminum
<b>CONNECTORS</b>	Unterminated power and data cable
<b>LISTINGS</b>	C-UL US listed, CE certified, Rated IP65

## COMMUNICATION SPECIFICATIONS

<b>DATA INTERFACE</b>	Color Kinetics data interface system
<b>CONTROL</b>	Color Kinetics full line of controllers or DMX512 (RS85) compatible when using Color Kinetics power/data supply

## ELECTRICAL SPECIFICATIONS

<b>POWER REQUIREMENT</b>	24VDC
<b>POWER CONSUMPTION</b>	Maximum: 6 Watts (1'), 12 Watts (2'), 24 Watts (4')
<b>POWER SUPPLY</b>	Color Kinetics PDS-150e (ITEM# 109-000008-01)

## ENVIRONMENTAL SPECIFICATIONS

<b>TEMPERATURE RANGE</b>	- 20° F to 122° F (- 29° C to 50° C)
<b>HUMIDITY RANGE</b>	0 to 95% non-condensing humidity

## SOURCE LIFE

Color Kinetics illumination products utilize high brightness LEDs as the illumination source. LED manufacturers predict LED life of up to 100,000 hours MTBF (mean time between failure), the standard used by conventional lamp manufacturers to measure source life. However, like all basic light sources, LEDs also experience lumen depreciation over time. So while LEDs can emit light for an extremely long period of time, MTBF is not the only consideration in determining useful life. LED lumen depreciation is affected by numerous environmental conditions such as ambient temperature, humidity and ventilation. Lumen depreciation is also affected by means of control, thermal management, current levels, and a host of other electrical design considerations.

Color Kinetics systems are expertly engineered to optimize LED life when used under normal operating conditions [ambient temperature: -4° F to 104° F (-20° C to 40° C), humidity: 0-95% non-condensing humidity, adequate ventilation and air volume] and when operated using typical color-changing effects. Long-term operation outside of these ranges or conditions, or at the upper limits of these ranges or conditions, may subject the product to further degradation of the LED source life, or in extreme cases, failure of internal components. Source life information is based on LED manufacturers' data, as well as other third party testing..



SUITABLE FOR WET LOCATIONS

ITEM# 101-000003-00 (4-foot)  
101-000003-01 (2-foot)  
101-000003-02 (1-foot)

U.S. PATENTS 6,016,038, 6,150,774 AND 6,340,868  
EUROPEAN PATENT 1,016,062  
OTHER PATENTS PENDING

©2000-2002 Color Kinetics Incorporated. All rights reserved.  
Chromacore, Color Kinetics, the Color Kinetics logo, ColorBlast, ColorPlay, ColorScape, iColor, iColor Cove, iPlayer, QuickPlay, and Smartjuice are registered trademarks, and ColorBurst is a trademark of Color Kinetics Incorporated.

All other brand or product names are trademarks or registered trademarks of their respective owners.

BR0046 Rev 07

Specifications subject to change without notice.

# iCOLOR FRESCO

## PHOTOMETRIC PERFORMANCE (PER FOOT)

### SOURCE SPECIFICATIONS

Optics:	Clear polycarbonate
Source:	45 LEDs (15 Red, 15 Green, 15 Blue) per foot
Beam Angle:	100° x 40° (at 50% of peak illuminance)
Distribution:	Asymmetric direct illumination
CCT:	Adjustable 1,000–10,000K
CRI:	Not measurable (CIE 13.3-1995)

### ILLUMINANCE DISTRIBUTION

0.8 9.1	1.4 14.9	1.3 13.8	1.3 13.9	1.4 14.9	0.8 9.1	1.5'/0.5m
2.1 22.9	3.9 43.0	4.5 48.5	4.5 48.5	3.9 42.9	2.1 22.8	
3.9 42.0	9.2 98.6	18.3 197	18.3 197	9.1 98.2	3.9 41.8	
3.9 42.1	9.2 99.0	18.4 198	18.4 198	9.2 98.5	3.9 41.9	0'/0m
2.1 23.0	4.0 43.3	4.5 48.9	4.5 48.9	4.0 43.2	2.1 22.9	
0.9 9.2	1.4 15.0	1.3 13.9	1.3 14.0	1.4 15.0	0.8 9.1	1.5'/0.5m
1.5'/0.5m		0'/0m				1.5'/0.5m

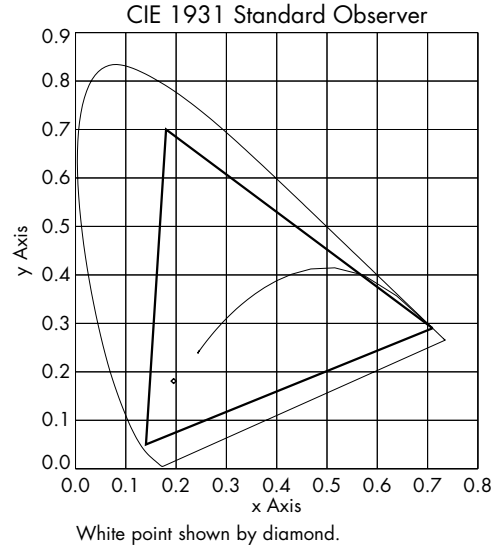
Units: Footcandles/Lux  
 Measured on: White  
 Distance from surface: 1'/0.3m (from center of grid)  
 Multipliers: 0.23 Red, 0.60 Green, 0.17 Blue

### ILLUMINANCE

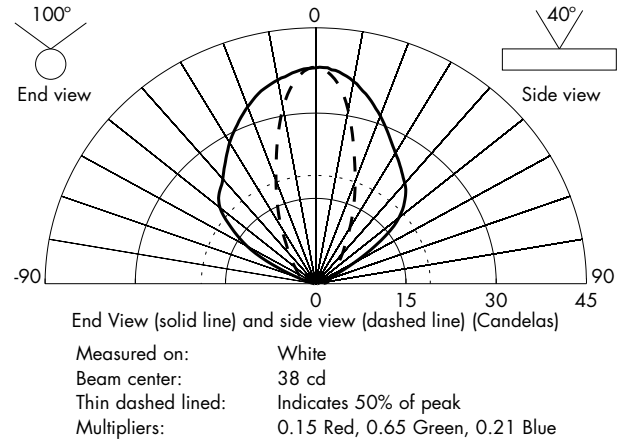
COLOR	3' 1m	6' 2m	9' 3m	12' 4m	15' 5m
WHITE	3.5 37.8	0.9 9.4	0.4 4.2	0.2 2.4	0.1 1.5
RED	0.5 5.7	0.1 1.4	0.1 0.6	0.0 0.4	0.0 0.2
GREEN	2.3 24.6	0.6 6.1	0.3 2.7	0.1 1.5	0.1 1.0
BLUE	0.7 7.9	0.2 2.0	0.1 0.9	0.0 0.5	0.0 0.3

Measured in Footcandles/Lux on axis.

### GAMUT



### CANDLE POWER DISTRIBUTION

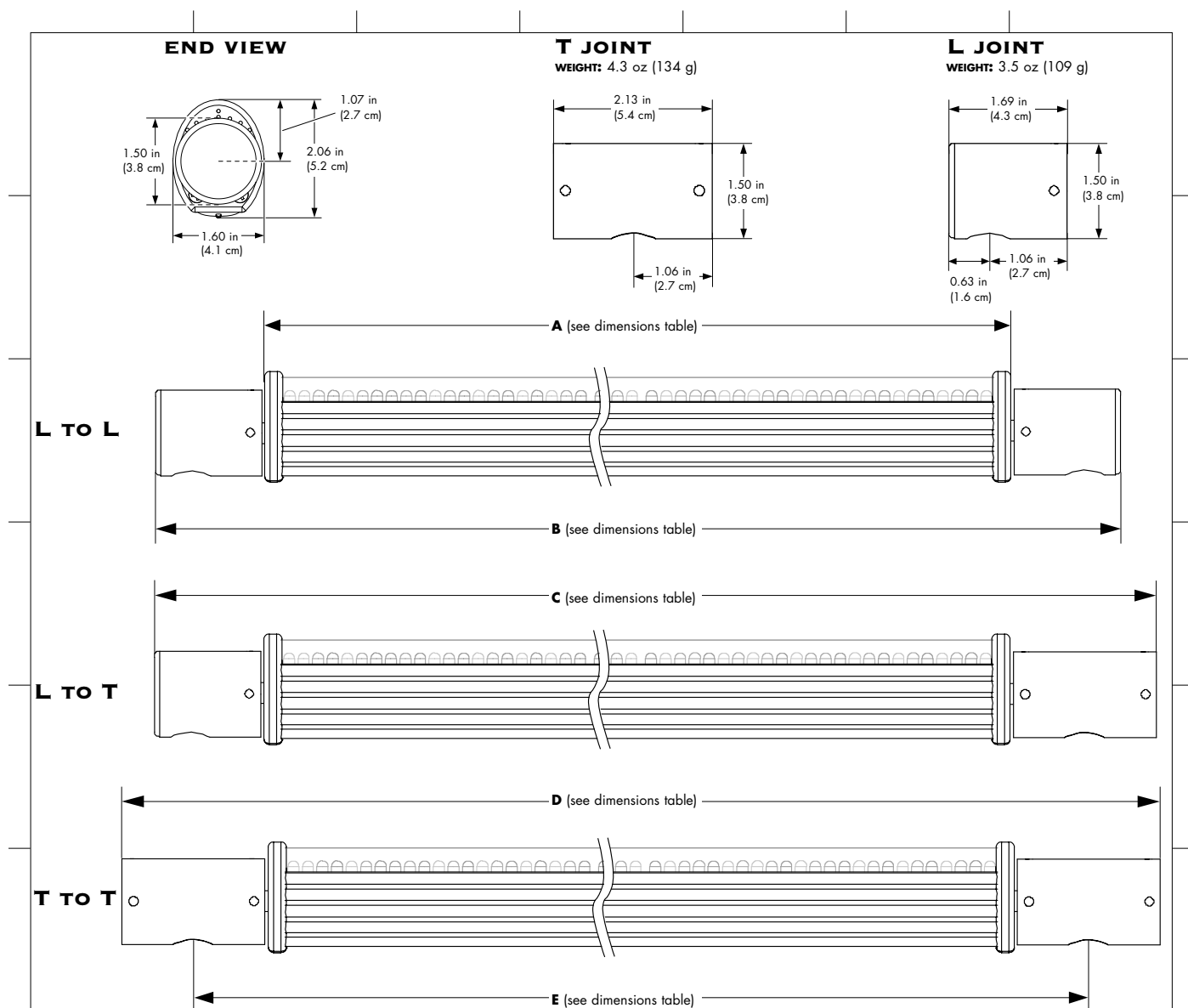


### LIGHT OUTPUT

COLOR	TOTAL OUTPUT (LUMENS)	POWER (WATTS)	EFFICACY (lm/w)
WHITE	48.2	6.1	7.9
RED	7.2	1.7	4.3
GREEN	31.4	2.5	12.8
BLUE	9.6	2.5	3.9

# iCOLOR FRESCO

## PHYSICAL DIMENSIONS



**iCOLOR FRESCO  
DIMENSIONS\***

MODEL	iColor Fresco 1'	iColor Fresco 2'	iColor Fresco 4'
<b>A</b>	12.33 in (31.3 cm)	24.09 in (61.2 cm)	47.61 in (120.9 cm)
<b>B</b>	16.00 in (40.6 cm)	27.75 in (70.5 cm)	51.25 in (130.2 cm)
<b>C</b>	16.44 in (41.8 cm)	28.19 in (71.6 cm)	51.69 in (131.3 cm)
<b>D</b>	16.88 in (42.9 cm)	28.63 in (72.7 cm)	52.13 in (132.4 cm)
<b>E</b>	14.75 in (37.5 cm)	26.50 in (67.3 cm)	50.00 in (127.0 cm)

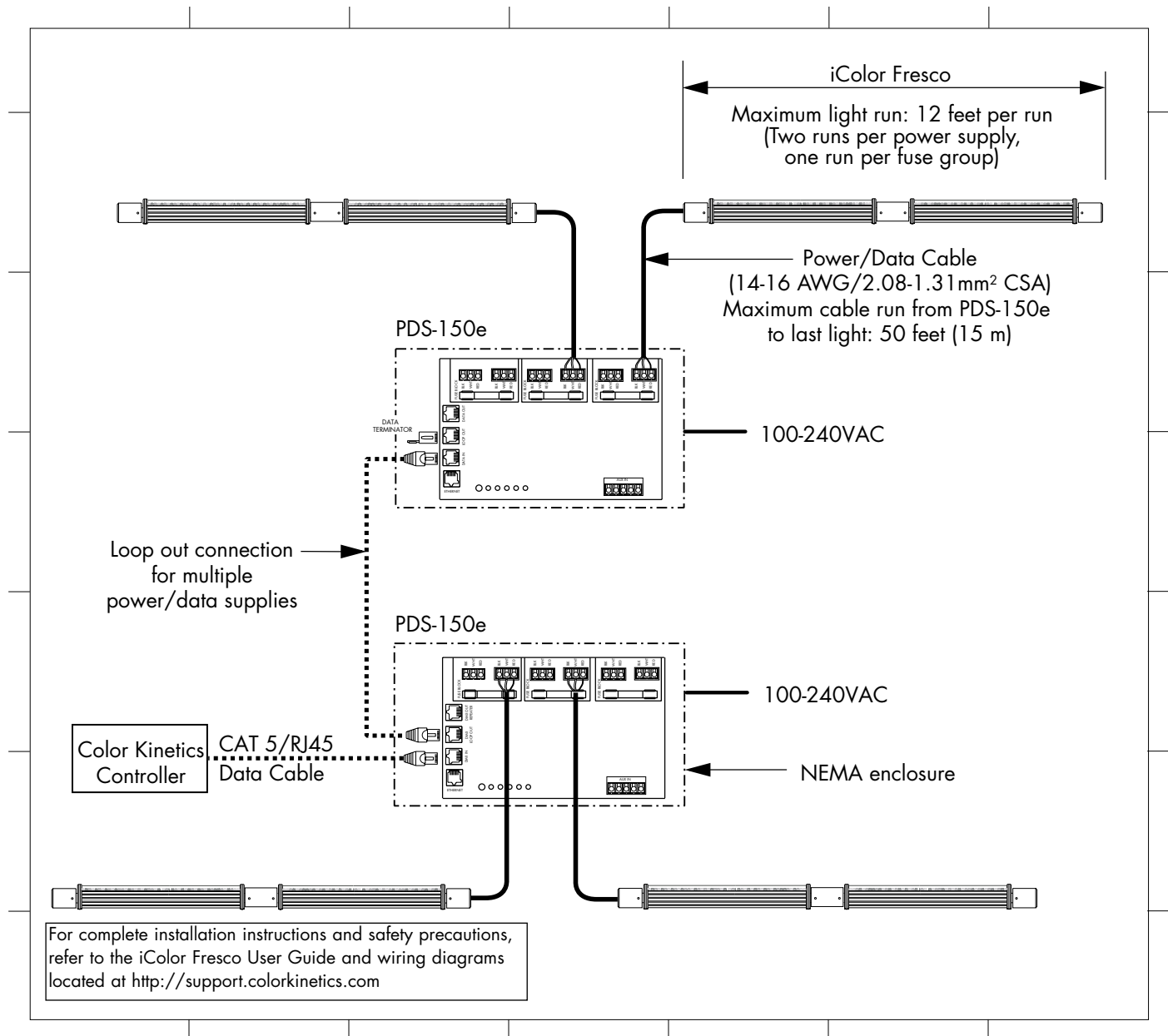
**iCOLOR FRESCO  
SPECIFICATIONS**

MODEL	iColor Fresco 1'	iColor Fresco 2'	iColor Fresco 4'
<b>WEIGHT</b>	14.5 oz (411 g)	1 lb, 10 oz (737 g)	3 lb, 1 oz (1389 g)
<b>DATA CONNECTOR</b>	Unterminated data cable	Unterminated data cable	Unterminated data cable
<b>POWER CONNECTOR</b>	Unterminated power cable	Unterminated power cable	Unterminated power cable
<b>POWER REQUIREMENT</b>	250 mA @ 24VDC (6 W)	500 mA @ 24VDC (12 W)	1 A @ 24VDC (24 W)

\* When installed, the L and T joints must be connected to electrical junction boxes with a length of threaded pipe or conduit. Be sure to take the pipe and junction box dimensions into account when calculating overall stand-off dimensions.

## iCOLOR FRESCO

### FUNCTIONAL FLOW DIAGRAM



### MANUFACTURING STANDARDS

To ensure the highest level of product reliability, this Color Kinetics design endured accelerated life test conditions including an operating temperature span of 360°F and cyclic loading up to 60G.

### U.S. AND FOREIGN PATENTS AND PATENTS PENDING

Color Kinetics Incorporated grants the purchaser of its lighting products and controllers a personal and non-transferable license to use Chromacore®, its patented technology for networkable control of LED-based color-changing lighting fixtures for illumination, display and design. This license is granted only by Color Kinetics Incorporated, and may not be transferred except by the grantor. The design, duplication, manufacture, or sale of other products using networkable control of LED-based color-changing lighting may be prohibited and is not licensed hereunder. Other patents pending.